

# Welsh TV channels instead of English TV channels?

- If you find you have TV services from Wales after you re-tune your Freeview TV or box, you should find Channel 4 at button 8 on your remote, and English BBC and ITV services further down the channel list, probably in the 800s
- If your Freeview TV or box has a **'favourites'** function, put your preferred TV services into your favourites list so you can find them easily
- If your equipment doesn't have a favourites function, you can do a **'manual re-tune'** to put the services you want back at the top of the list

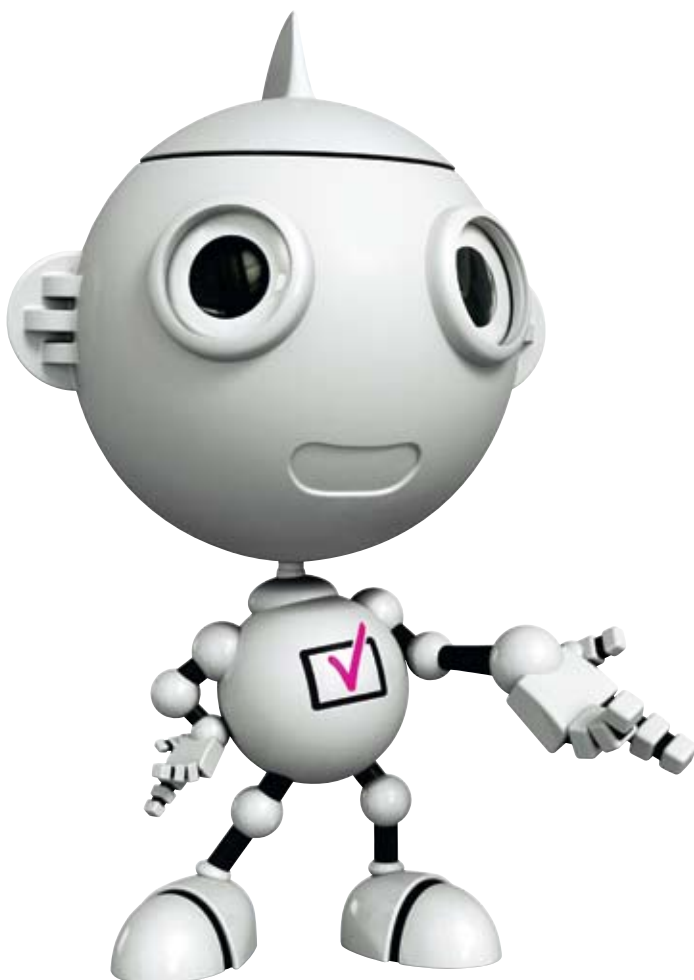
- First, unplug the aerial from the TV or box and carry out your usual retune
- Then re-connect the aerial and follow the procedure below. While exact instructions vary, here is a guide of what to do:

1. Using your remote control, press the **'menu'** button
2. Select the **'set up'** or **'installation'** option
3. Select **'manual re-tune'** or **'manual search'**
4. If you are prompted for a code, try 0000 or 1234
5. To manually tune in BBC services type in  where it asks for a 'channel' number and press **'OK'**
6. You need to repeat steps 1-5 to manually re-tune the other groups of channels, one by one:
7. Then press **'menu'** or **'exit'**
8. You should now find your preferred services back at the top of the channel list

**You will need to do this every time you re-tune so keep these instructions.**

'Channel' numbers vary by postcode. For more information call **08456 50 50 50\*** or visit [digitaluk.co.uk/retuning](http://digitaluk.co.uk/retuning)

\*Calls are free for BT customers within inclusive calling plans. Call charges from other providers may vary.



**digitaluk**

Providing independent advice.