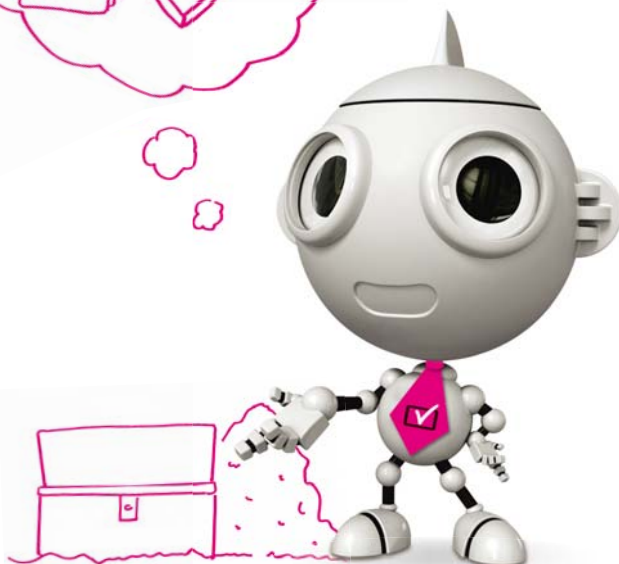


Make your own TV time capsule

Celebrate the digital TV switchover by creating your own TV time capsule. You can fill the capsule with objects that are linked to television as we know it today, for people to find in the future. What will you bury and how much will television have changed when your time capsule is finally discovered?

You will need:

- a box to use as your time capsule
- coloured paper
- coloured pens
- TV listings magazine
- glue
- items to include in your time capsule
- a waterproof bag



Instructions

1. Use the box as your TV time capsule. It can be any shape or size, but it must be strong enough so that it does not break when it is buried. (For example, a sandwich box or a strong shoe box.)
2. Decorate your box. You can draw TVs or Digit Al on the box or cut pictures out of magazines and stick them on to it.
3. When you have decorated your box and the glue is dry, it is time to fill it! Always ask an adult if you are not sure what you can put in. You could put in a magazine article about your favourite programme, your TV timeline and a letter to whoever will find the time capsule in the future.
4. Wrap your TV time capsule in a plastic bag so it will keep dry when you bury it.
5. Now it's time to bury the capsule! Ask an adult to dig a hole in the ground for your capsule.

Safety tips:

Always ask an adult for help when you are using glue or scissors. You will need an adult to make a hole in the ground for you to bury the TV time capsule in.