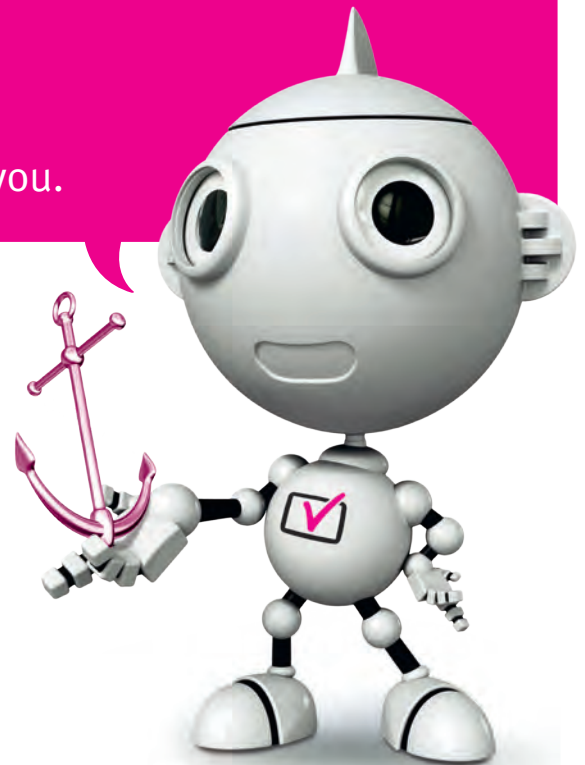


# Offshore Boats

How the digital TV switchover may affect you.



## What is the digital TV switchover?

TV in the UK is going digital, and the existing analogue signal is being switched off TV region by TV region between now and 2012.

Digital UK is the independent not-for-profit company responsible for leading the digital TV switchover.

### Use our postcode checker

Use Digital UK's postcode checker at:

**[digitaluk.co.uk](http://digitaluk.co.uk)**

to find out when your region switches to digital and what services you will be able to receive after switchover.

## What does digital switchover mean for offshore boats?

Any TV not converted to digital will not work after the switchover. If you are travelling around the UK the availability of digital TV is likely to vary from location to location.

## You can receive a digital TV signal in a number of ways:

1. An aerial
2. A satellite
3. A laptop or PC

### 1. Through an aerial

#### Individual aerials

You may need to upgrade your aerial to get a good picture wherever you travel. We recommend that you use a good quality directional aerial and have it safely mounted as high as possible. Whilst an external aerial is likely to give you the best reception, you could also consider a set-top aerial. For more information on set-top aerials see Ricability's website at [www.ricability-digitaltv.org.uk](http://www.ricability-digitaltv.org.uk)

## Communal aerial systems

Some moorings enable TV signals to be piped directly to boats through a communal aerial system. The moorings manager will be able to tell you whether the system is able to receive a digital TV signal. They will need to check whether the system will need attention to pick up the digital TV signals during and after the switchover.

You can choose to upgrade your television with either:

- A digital box that can be connected to your existing television. Remember that if you choose this option the digital box will also need a power supply.
- A digital TV (IDTV) with a digital box built-in.

## 2. Through a satellite dish

To receive digital TV through a satellite you will need to have a satellite dish and a digital receiver. You can choose from a manually operated dish, which will need to be regularly re-aligned with the satellite (you can do this using a satellite finder). Alternatively you can install an automated dish, which remains locked onto the satellite when the boat is on the move. These can be purchased from specialist boating suppliers. There are subscription and non-subscription services available to you.

Contact Sky, Freesat from Sky, freesat, or your satellite supplier for more information.

## 3. Through a laptop or PC

You can also receive digital television through your laptop or PC, by connecting a digital TV receiver. These are small devices that plug into the USB hub, and have an antenna or aerial lead. These can be purchased from most computer suppliers.

## Further Information

Freeview	<a href="http://www.freeview.co.uk">www.freeview.co.uk</a>
freesat	<a href="http://www.freesat.co.uk">www.freesat.co.uk</a> 0845 313 0053
Sky	<a href="http://www.sky.com">www.sky.com</a> 08442 410 285
Freesat from Sky	<a href="http://www.freesatfromsky.com">www.freesatfromsky.com</a> 08442 410 595

## Specialist Boating Television Equipment Suppliers

Leisurepower	<a href="http://www.leisurepower.co.uk">www.leisurepower.co.uk</a>
Maxview	<a href="http://www.maxview.ltd.uk">www.maxview.ltd.uk</a>
Roadpro	<a href="http://www.roadpro.co.uk">www.roadpro.co.uk</a>
Trans Leisure	<a href="http://www.transleisure.co.uk">www.transleisure.co.uk</a>



For more information on the digital TV switchover contact Digital UK.  
Call us on **08458 455 455\*** or visit us at [digitaluk.co.uk/propertymanagers](http://digitaluk.co.uk/propertymanagers)



get set for digital

\*Calling rates to a UK based 0845 number may vary according to your network provider or mobile operator. The standard business hours for Digital UK's contact centre are 8am to 7pm Monday to Friday and 10am to 4pm on Saturday. Opening hours will be extended during switchover in each area. Digital UK, PO Box 26833, Kirkcaldy, KY2 9AG.